

# 高壓全密氣對氣立式鼠籠型泵浦用馬達

**MODEL : A EVE**

STANDARD 3-PHASE INDUCTION MOTORS  
MEDIUM VOLTAGE ( 1801~4200V ) SQUIRREL CAGE  
FRAME NO. (ERV) 450M ~ 1000A



DWG NO.

3A057H552E

REV. 01

		<b>SPECIFICATION TABLE</b>	MODEL
		<b>STANDARD 3-PHASE INDUCTION MOTORS MEDIUM VOLTAGE SQUIRREL CAGE</b>	<b>A EVE</b>
<b>ITEM</b>		<b>STANDARD SPECIFICATION</b>	
<b>R A T I N G</b>	KIND OF MOTOR	SQUIRREL-CAGE INDUCTION MOTOR (SCIM)	
	DESIGN STANDARD	IEC, NEMA	
	VOLTAGE	1801 ~ 4200V	
	FREQUENCY	50HZ, 60Hz	
	FRAME NO. (ERV)	450M ~ 1000A	
	OUTPUT RANGE	300 ~ 5500HP (225 ~ 4101kW) 50HZ 400 ~ 5500HP (300 ~ 4101kW) 60HZ	
	R.P.M. (SYN.)	1500 ~ 500R.P.M. (4 ~ 12 POLE) 50HZ 1800 ~ 600R.P.M. (4 ~ 12 POLE) 60HZ	
	TIME DUTY	INVERTER DUTY: CONSTANT TORQUE (CT=3:1); VARIABLE TORQUE (VT=4:1); CONSTANT HORSEPOWER (CHP=1:1.1), OR 1.15 (SINUSOIDAL)	
	PROTECTION ENCLOSURE	TOTALLY ENCLOSED (IP 54)	
	COOLING METHOD	EXTERNAL AND INTERNAL FANS, WITH AIR TO AIR HEAT EXCHANGER WHICH IS AN INDEPENDENT UNIT MOUNTED DIRECTLY ON THE MOTOR (IC 611)	
	MOUNTING	FLANGE MOUNTING (IM 3011)	
<b>A P P L I C A T I O N</b>	POWER CONDITIONS	VOLTAGE $\pm 10\%$ , FREQUENCY $\pm 5\%$ AND 10% MAX. OF COMBINED VOLTAGE AND FREQUENCY WITH FREQUENCY NOT TO EXCEED 5%	
	ENVIRONMENT CONDITIONS	PLACE : SHADOW, NON-HAZARDOUS CSA CLASS I, DIV. 2, GROUP, B, C, D, T3 (OPTION) AMBIENT TEMPERATURE : -20 ~ 40°C (STANDARD); -20 ~ +50 (AVAILABLE WHEN REQUEST, FRAME SIZE MAY BY CHANGED) RELATIVE HUMIDITY : LESS THAN 95%RH (NON-CONDENSATION) ALTITUDE : LESS THAN 1,000 METERS	
	OPERATING CONDITIONS	DIRECT COUPLING, SUITABLE FOR FLUID DUTY ONLY	
	DIRECTION OF ROTATION	BI-DIRECTIONAL (4~12P)	
	METHOD OF STARTING	FULL VOLTAGE DIRECT ON LINE	
<b>P E R F O R M A N C E</b>	TEST PROCEDURE	IEC 60034, IEEE 112	
	TYPICAL PERFORMANCE	AS DWG NO. 3A057H555E, 3A057H971E	
	TEMPERATURE RISE	S.F. 1.0 80°C BY RESISTANCE METHOD AT SINEWAVE POWER S.F. 1.15 105°C BY RESISTANCE METHOD AT SINEWAVE POWER S.F. 1.0 105°C BY RESISTANCE METHOD AT INVERTER DUTY	
	OVER SPEED	TWO MIN., 125% MAX. RATED SPEED BELOW 1800RPM	
	OVER TORQUE	160% RATED TORQUE FOR 15 SEC.	

<b>PERFORMANCE DATA</b>												MODEL			
3-PHASE SQUIRREL CAGE INDUCTION MOTORS MEDIUM VOLTAGE SQUIRREL CAGE												<b>A EVE</b>			
<b>3300V 50HZ</b>															

TEAAC , BS , DESIGN-B , CLASS F INS , CLASS B TEMP , 40°C AMBIENT , S.F.1.0  
2200~4160V ( 2300V,3300V,4160V ) 3-PHASE 50HZ

TYPICAL PERFORMANCE ( 3300 V )

OUTPUT		FULL LOAD RPM	FRAME NO. (ERV)	TORQUE lb-ft	FULL LOAD						LOCKED ROTOR		BREAK- DOWN TORQUE %FLT	ROTOR GD <sup>2</sup> KG-M <sup>2</sup>	APPROX. WEIGHT KGS	
HP	(kW)				EFFICIENCY (%)			POWER FACTOR (%)			CURRENT A	TORQUE %FLT				CURRENT A
					FULL LOAD	3/4 LOAD	1/2 LOAD	FULL LOAD	3/4 LOAD	1/2 LOAD						
300	225	490	450A-110R	3214	93.7	93.0	92.1	72.0	66.0	55.0	58.0	85	302	200	155	4100
		590	450A-110R	3114	94.0	93.3	92.5	74.5	69.5	59.0	65.2	85	352	210	130	3700
350	260	490	450C-110R	3750	93.8	93.3	92.5	72.5	66.5	55.5	67.2	85	349	200	180	4500
		740	450M-110R	2838	94.1	93.7	93.0	80.0	76.0	67.0	69.3	85	406	210	110	3300
400	300	590	450A-110R	3559	94.0	93.5	92.8	75.0	70.0	59.5	74.1	85	402	205	150	4000
		490	450C-110R	4286	94.0	93.5	92.8	72.5	67.0	56.0	76.6	90	400	200	250	4600
450	335	740	450A-110R	3193	94.4	93.8	93.2	79.5	76.0	67.0	78.3	85	457	210	125	3500
		590	450C-110R	4004	94.2	93.3	93.2	75.0	70.0	59.5	83.1	85	453	205	165	4400
450	335	490	500A-125R	4821	94.2	93.3	93.2	73.0	67.0	56.0	85.4	90	449	200	275	5100
		985	450M-110R	2665	94.5	94.0	93.5	82.0	79.0	72.5	84.2	85	507	220	75	3500
500	375	740	450A-110R	3547	94.4	94.0	93.5	79.5	75.5	67.0	87.0	90	503	215	135	3700
		590	450C-110R	4449	94.4	94.0	93.5	76.0	71.0	61.0	91.0	85	499	210	180	4500
500	375	490	500C-125R	5357	94.3	94.0	93.5	74.0	68.5	57.0	93.5	90	497	200	295	6000
		985	450A-110R	3198	94.7	94.0	93.5	82.0	79.0	72.5	101	85	614	220	100	3850
600	450	740	450A-110R	4257	94.6	94.0	93.5	80.0	76.0	68.0	103	90	609	215	160	3800
		590	500A-125R	5339	94.6	93.9	93.5	76.0	71.0	61.0	109	90	604	210	250	4900
600	450	490	500C-125R	6429	94.6	94.0	93.5	74.0	68.5	57.0	112	85	598	200	345	6100
		1480	450M-110R	2483	95.0	94.2	93.7	85.0	83.0	79.0	113	85	710	215	55	3800
700	520	985	450A-110R	3731	95.0	94.2	93.7	82.0	79.0	72.5	117	90	704	215	115	4000
		740	500M-110R	4966	94.9	94.2	93.8	80.0	76.0	68.0	120	85	701	220	210	5200
700	520	590	500C-125R	6229	95.0	94.2	93.7	76.5	71.0	61.0	126	85	698	210	290	5800
		490	560A-140R	7500	94.9	94.2	93.7	75.0	68.5	57.0	128	85	692	200	530	6800
800	600	1480	450A-110R	2838	95.1	94.4	94.1	85.0	83.0	79.0	129	85	812	220	66	4000
		985	500M-110R	4264	95.0	94.3	94.0	82.5	79.5	73.0	133	90	809	220	125	5200
800	600	740	500A-125R	5676	95.0	94.4	94.1	80.0	76.0	68.0	137	85	805	215	240	5400
		590	500C-125R	7119	95.0	94.3	94.0	77.0	71.0	61.0	143	95	798	210	335	6000
800	600	490	560C-140R	8571	95.0	94.3	94.0	75.0	68.5	57.0	147	90	794	200	600	8000
		1480	450A-110R	3193	95.2	94.5	94.2	85.0	83.0	79.0	145	85	908	220	72	4100
900	670	985	500M-110R	4797	95.1	94.3	94.0	82.5	79.5	73.0	150	85	905	220	140	5500
		740	500A-125R	6385	95.1	94.4	94.1	81.0	77.0	69.0	152	90	900	210	270	5600
900	670	590	560A-140R	8008	95.1	94.3	94.0	77.0	72.0	61.5	160	85	898	205	460	7000
		490	630A-160R	9643	95.0	94.3	94.0	75.0	70.0	59.0	165	90	899	210	800	9500

OUTPUT		FULL LOAD RPM	FRAME NO. (ERV)	TORQUE lb-ft	FULL LOAD						LOCKED ROTOR		BREAK- DOWN TORQUE %FLT	ROTOR GD <sup>2</sup> KG-M <sup>2</sup>	APPROX. WEIGHT KGS	
HP	(kW)				EFFICIENCY (%)			POWER FACTOR (%)			CURRENT A	TORQUE %FLT				CURRENT A
					FULL LOAD	3/4 LOAD	1/2 LOAD	FULL LOAD	3/4 LOAD	1/2 LOAD						
1000	750	1480	500M-110R	3547	95.4	94.6	94.1	85.5	83.5	79.5	160	85	1028	220	75	5500
		985	500A-125R	5330	95.2	94.5	94.0	83.0	80.0	74.0	165	90	1020	220	190	5800
		740	560M-125R	7095	95.3	94.6	94.1	81.0	77.0	69.0	169	95	1015	210	305	7000
		590	560C-140R	8898	95.2	94.5	94.0	77.0	72.0	61.5	178	90	1010	210	510	8000
		490	630C-160R	10714	95.2	94.5	94.0	75.0	70.0	59.0	183	85	1005	210	900	10500
1250	930	1480	500M-110R	4434	95.5	94.6	94.1	85.5	83.5	79.5	200	85	1280	220	95	5750
		985	560M-125R	6662	95.4	94.5	94.0	83.0	80.0	74.0	206	90	1270	225	235	6700
		740	560A-140R	8868	95.4	94.6	94.1	81.5	77.5	69.5	210	95	1260	215	380	7200
		590	630A-160R	11123	95.2	94.5	94.0	77.0	72.0	61.5	223	90	1250	210	720	9600
		490	630C-160R	13393	95.2	94.5	94.0	75.0	70.0	59.0	228	90	1240	220	940	10800
1500	1120	1480	500A-125R	5321	95.6	94.6	94.1	86.0	84.0	80.5	238	85	1540	225	135	6000
		985	560A-140R	7995	95.4	94.5	94.0	83.5	80.5	74.5	246	90	1530	215	300	7000
		740	630M-140R	10642	95.4	94.6	94.1	81.5	77.5	69.5	252	90	1520	220	445	9100
		590	630C-160R	13347	95.3	94.5	94.0	77.5	72.5	62.0	265	85	1510	215	900	10600
		490	710A-160R	16071	95.3	94.5	94.0	75.5	70.5	59.5	272	85	1495	215	1080	12000
1750	1320	1480	560M-125R	6208	95.7	95.1	94.8	86.0	84.0	80.5	278	85	1800	225	155	7500
		985	630M-140R	9327	95.5	95.0	94.7	83.5	80.5	74.5	286	90	1780	225	350	8450
		740	630A-160R	12416	95.4	95.1	94.8	82.0	78.0	70.0	292	95	1770	215	650	9400
		590	710A-160R	15572	95.4	95.0	94.7	77.5	72.5	62.0	309	85	1760	220	1100	12200
		490	800M-180R	18750	95.3	95.0	94.7	76.0	71.0	60.0	315	90	1750	220	1250	14000
2000	1500	1480	560A-140R	7095	95.7	95.2	94.9	86.5	84.5	81.0	315	85	2070	225	230	7700
		985	630M-140R	10660	95.5	95.1	94.8	84.0	81.0	75.0	325	90	2040	220	400	9000
		740	710M-160R	14189	95.4	95.1	94.8	82.5	78.5	71.0	332	90	2020	220	720	10800
		590	800M-180R	17797	95.4	95.1	94.8	78.0	73.0	63.0	351	85	2010	215	1140	15500
		490	800A-180R	21429	95.3	95.1	94.8	77.0	72.0	61.5	356	85	1995	210	2120	18000
2500	1850	1480	560A-140R	8868	95.8	95.4	95.1	86.5	84.5	81.0	394	85	2580	220	244	7900
		985	630A-160R	13325	95.6	95.2	94.9	84.0	81.0	75.0	406	90	2560	210	540	9900
		740	710A-160R	17736	95.6	95.2	94.9	82.5	78.5	71.0	414	95	2540	220	850	12500
		590	800A-180R	22246	95.6	95.2	94.9	78.0	73.0	63.0	438	85	2520	210	2100	17500
		490	800A-180R	26786	95.5	95.2	94.9	77.0	72.0	61.5	444	90	2500	215	2180	18800
3000	2240	1480	630M-140R	10642	96.0	95.9	95.6	86.5	84.5	81.0	472	85	3100	220	294	9000
		985	710M-160R	15990	95.8	95.7	95.4	85.0	82.0	76.0	481	90	3080	210	630	10500
		740	800M-180R	21284	95.8	95.7	95.4	83.0	79.0	71.5	492	90	3060	215	1020	14700
		590	800A-180R	26695	95.8	95.7	95.4	79.0	75.0	66.0	517	85	3040	210	2220	18200
		490	900M-200R	32143	95.7	95.6	95.2	77.5	72.5	62.0	528	95	3010	215	2320	21000
3500	2650	1480	630A-160R	12416	96.0	95.9	95.6	86.5	84.5	81.0	550	85	3600	220	450	10000
		985	710A-160R	18655	96.0	95.9	95.6	85.0	82.0	76.0	560	90	3580	225	700	12200
		740	800A-180R	24831	96.0	95.9	95.6	83.0	79.0	71.5	573	85	3560	215	2100	17800
		590	900M-200R	31144	96.0	95.9	95.6	79.0	75.0	66.0	602	90	3520	220	2360	20000
		490	900A-220R	37500	96.0	95.9	95.6	77.5	72.5	62.0	614	90	3490	215	4090	23800

OUTPUT		FULL LOAD RPM	FRAME NO. (ERV)	TORQUE lb-ft	FULL LOAD						LOCKED ROTOR		BREAK-DOWN TORQUE %FLT	ROTOR GD <sup>2</sup> KG-M <sup>2</sup>	APPROX. WEIGHT KGS	
HP	(kW)				EFFICIENCY (%)			POWER FACTOR (%)			CURRENT A	TORQUE %FLT				CURRENT A
					FULL LOAD	3/4 LOAD	1/2 LOAD	FULL LOAD	3/4 LOAD	1/2 LOAD						
4000	3000	985	800M-180R	21320	96.1	95.9	95.6	85.0	82.0	76.0	639	85	4090	225	820	16700
		740	800A-180R	28378	96.0	95.9	95.6	83.5	79.5	72.0	651	90	4070	220	2160	18500
		590	900A-220R	35594	96.0	95.9	95.6	79.0	75.0	66.0	688	90	4050	210	4080	23500
		490	900A-220R	42857	96.0	95.9	95.6	77.5	72.5	62.0	702	90	4020	215	4150	24700
4500	3350	985	800A-180R	23985	96.2	96.0	95.7	85.5	82.5	76.5	714	85	4490	225	1600	18000
		740	900M-200R	31926	96.1	96.0	95.7	84.0	80.0	72.5	728	90	4470	220	2220	23000
		590	900A-220R	35594	96.1	96.0	95.7	79.5	75.5	66.5	769	90	4440	210	4140	24600
		490	1000M-220F	48214	96.1	96.0	95.7	78.0	73.0	62.5	784	90	4400	215	4320	27500
5000	3750	985	800A-180R	26650	96.2	96.0	95.7	85.5	82.5	76.5	793	85	4990	225	1710	19200
		740	900M-200R	35473	96.1	96.0	95.7	84.0	80.0	72.5	808	90	4960	220	2280	24000
		590	1000M-220F	35594	96.1	96.0	95.7	79.5	75.5	66.5	854	90	4940	210	4280	29000
		490	1000A-240R	53571	96.1	96.0	95.7	78.0	73.0	62.5	871	90	4910	215	5040	30000
5500	4101	740	900A-220R	39020	96.2	96.1	95.8	84.0	80.0	72.5	888	90	5460	220	3300	25200
		590	1000M-220F	35594	96.2	96.1	95.8	80.0	76.0	67.0	933	90	5420	210	4360	30200
		490	1000A-240R	58929	96.2	96.1	95.8	78.5	73.5	63.0	951	90	5380	215	5160	31200

<b>PERFORMANCE DATA</b>										MODEL	
										<b>A EVE</b>	
3-PHASE SQUIRREL CAGE INDUCTION MOTORS MEDIUM VOLTAGE SQUIRREL CAGE										<b>3300V 60HZ</b>	

TEAAC , BS , DESIGN-B , CLASS F INS , CLASS B TEMP , 40°C AMBIENT , S.F.1.0  
2200~4160V ( 2300V,3300V,4160V ) 3-PHASE 60HZ

TYPICAL PERFORMANCE ( 3300 V )

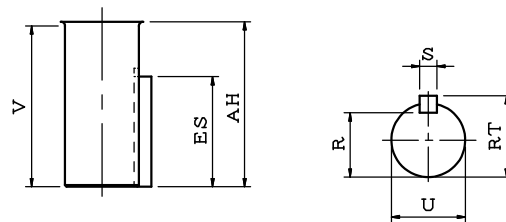
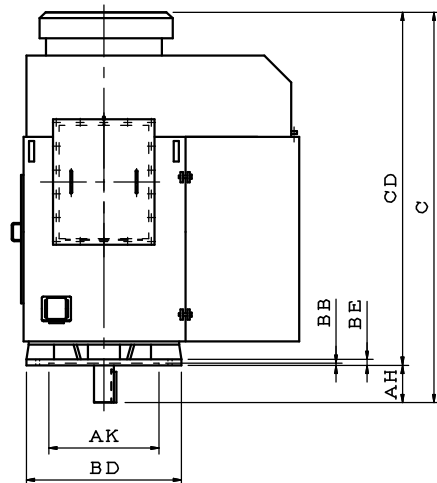
OUTPUT		FULL LOAD RPM	FRAME NO. (ERV)	TORQUE lb-ft	FULL LOAD						LOCKED ROTOR		BREAK- DOWN TORQUE %FLT	ROTOR GD <sup>2</sup> KG-M <sup>2</sup>	APPROX. WEIGHT KGS	
HP	(kW)				EFFICIENCY (%)			POWER FACTOR (%)			CURRENT A	TORQUE %FLT				CURRENT A
					FULL LOAD	3/4 LOAD	1/2 LOAD	FULL LOAD	3/4 LOAD	1/2 LOAD						
400	300	590	450C-110R	3559	94.0	93.9	93.6	74.0	69.0	58.0	75.1	85	402	200	170	4300
		710	450A-110R	3327	94.4	93.9	93.6	76.0	71.0	60.5	81.9	85	457	210	135	3700
450	335	590	450C-110R	4004	94.2	93.9	93.6	74.0	69.0	58.0	84.3	85	453	210	190	4500
		880	450M-110R	2983	94.4	94.0	93.6	80.0	76.0	68.0	86.4	85	503	210	100	3800
500	375	710	450A-110R	3697	94.2	94.0	93.6	77.0	72.0	61.5	90.0	85	499	210	150	4000
		590	500A-125R	4449	94.2	94.0	93.6	75.0	70.0	59.0	92.4	85	494	200	245	5000
600	450	1180	450M-110R	2669	94.6	94.4	94.1	82.0	79.0	72.0	101	90	609	220	70	3300
		880	450A-110R	3580	94.5	94.3	94.0	80.0	76.0	68.0	104	90	604	220	142	3500
		710	450C-110R	4437	94.6	94.4	94.1	77.0	72.0	61.5	108	85	598	210	172	4500
		590	500C-125R	5339	94.4	94.3	94.1	75.0	70.0	59.0	111	85	598	210	296	5600
700	520	1180	450M-110R	3114	95.0	94.4	94.1	82.0	79.0	72.0	117	85	710	220	80	3550
		880	450A-110R	4176	94.8	94.5	94.2	80.0	76.0	68.0	120	90	704	220	160	3700
		710	500A-125R	5176	94.9	94.4	94.1	77.0	72.0	61.5	125	90	698	210	236	4900
		590	500C-125R	6229	94.8	94.4	94.1	75.0	70.0	59.0	128	85	704	210	350	6000
800	600	1780	450M-110R	2360	95.1	94.8	94.5	85.0	83.0	79.0	129	85	819	225	50	3700
		1180	450A-110R	3559	95.0	94.7	94.4	82.5	79.5	73.0	133	90	798	220	110	4000
		880	500M-110R	4773	95.1	94.7	94.4	81.0	77.0	69.0	136	90	812	215	180	4750
		710	500A-125R	5915	95.0	94.6	94.2	77.0	72.0	61.5	143	85	805	210	266	5200
		590	560A-140R	7119	95.0	94.5	94.1	75.0	70.0	59.0	147	80	798	210	480	6800
900	670	1780	450M-110R	2654	95.2	94.8	94.5	85.5	83.5	79.5	144	85	905	230	61	3900
		1180	450A-110R	4004	95.1	94.7	94.4	83.0	80.0	74.0	149	90	898	220	121	4300
		880	500A-125R	5369	95.2	94.7	94.4	81.0	77.0	69.0	152	90	913	220	242	5000
		710	500C-125R	6655	95.1	94.7	94.4	77.0	72.0	61.5	160	90	905	210	300	5800
		590	560C-140R	8008	95.1	94.6	94.2	75.0	70.0	59.0	165	85	913	200	540	7800
1000	750	1780	450A-110R	2949	95.3	94.9	94.6	85.5	83.5	79.5	160	90	1015	225	70	4000
		1180	500M-110R	4449	95.2	94.9	94.6	83.0	80.0	74.0	165	90	1015	220	130	5300
		880	500A-125R	5966	95.2	94.8	94.5	81.5	77.5	69.5	168	95	1006	220	260	5600
		710	560A-140R	7394	95.2	94.8	94.5	77.0	72.0	61.5	178	90	1006	210	410	7000
		590	560C-140R	8898	95.1	94.8	94.5	75.0	70.0	59.0	183	85	997	220	600	8400
1250	930	1780	500M-110R	3687	95.4	95.1	94.8	85.5	83.5	79.5	200	90	1268	225	80	4200
		1180	500A-125R	5561	95.1	95.0	94.7	83.0	80.0	74.0	207	90	1257	220	210	5800
		880	560M-125R	7457	95.2	95.1	94.8	81.5	77.5	69.5	210	95	1247	220	320	6700

OUTPUT		FULL LOAD RPM	FRAME NO. (ERV)	TORQUE lb-ft	FULL LOAD							LOCKED ROTOR		BREAK- DOWN TORQUE %FLT	ROTOR GD <sup>2</sup> KG-M <sup>2</sup>	APPROX. WEIGHT KGS
HP	(KW)				EFFICIENCY (%)			POWER FACTOR (%)			CURRENT A	TORQUE %FLT	CURRENT A			
					FULL LOAD	3/4 LOAD	1/2 LOAD	FULL LOAD	3/4 LOAD	1/2 LOAD						
1250	930	710	560C-140R	9243	95.1	95.0	94.7	77.0	72.0	61.5	223	90	1257	210	505	8000
		590	630A-160R	11123	95.1	95.0	94.7	75.0	70.0	59.0	229	85	1236	220	850	9500
1500	1120	1780	500M-110R	4424	95.4	95.2	94.9	86.0	84.0	80.5	239	90	1535	225	95	5350
		1180	560M-125R	6674	95.2	95.1	94.8	83.5	80.5	74.5	246	95	1522	220	250	6850
		880	560A-140R	8949	95.2	95.1	94.8	81.5	77.5	69.5	252	90	1496	220	370	7200
		710	630A-160R	11092	95.2	95.1	94.8	77.5	72.5	62.0	265	90	1509	210	760	9500
		590	630C-160R	13347	95.2	95.1	94.8	75.5	70.5	59.5	272	90	1483	220	900	10800
1750	1320	1780	500A-125R	5162	95.5	95.4	95.1	86.0	84.0	80.5	278	90	1776	225	125	6000
		1180	560A-140R	7786	95.4	95.2	94.9	83.5	80.5	74.5	287	90	1791	225	315	7000
		880	630M-140R	10440	95.4	95.2	94.9	82.0	78.0	70.0	292	95	1745	220	430	9050
		710	630C-160R	12940	95.4	95.2	94.9	77.5	72.5	62.0	309	90	1730	210	890	10500
		590	710A-160R	15572	95.4	95.2	94.9	76.0	71.0	60.0	315	85	1760	220	960	12200
2000	1500	1780	560M-125R	5899	95.8	95.7	95.4	86.5	84.5	81.0	315	90	2047	220	140	7200
		1180	630M-140R	8898	95.5	95.4	95.1	84.0	81.0	75.0	325	90	2012	220	350	8600
		880	630A-160R	11932	95.5	95.4	95.1	82.5	78.5	71.0	331	90	2029	210	570	9600
		710	710A-160R	14789	95.5	95.4	95.1	78.0	73.0	63.0	350	85	1994	215	1080	12200
		590	800M-180R	17797	95.4	95.2	94.9	77.0	72.0	61.5	355	85	2012	225	1130	14500
2500	1850	1780	560A-140R	7374	96.0	95.9	95.6	86.5	84.5	81.0	393	90	2537	220	235	7600
		1180	630M-140R	11123	95.8	95.7	95.4	84.0	81.0	75.0	405	90	2559	210	425	9100
		880	710M-160R	14915	95.8	95.7	95.4	82.5	78.5	71.0	413	85	2515	210	670	11800
		710	800M-180R	18486	95.8	95.7	95.4	78.0	73.0	63.0	437	90	2489	220	1100	14500
		590	800A-180R	22246	95.7	95.6	95.2	77.0	72.0	61.5	443	85	2489	230	2150	18000
3000	2240	1780	560A-140R	8848	96.0	95.9	95.6	86.5	84.5	81.0	472	90	3070	225	250	7900
		1180	630A-160R	13347	96.0	95.9	95.6	85.0	82.0	76.0	480	90	3044	220	566	9800
		880	710A-160R	17898	96.0	95.9	95.6	83.0	79.0	71.5	491	90	3018	210	830	12500
		710	800A-180R	22183	96.0	95.9	95.6	79.0	75.0	66.0	516	85	2992	220	2100	17500
		590	800A-180R	26695	96.0	95.9	95.6	77.5	72.5	62.0	526	85	2965	230	2180	18800
3500	2650	1780	630M-140R	10323	96.0	95.9	95.6	86.5	84.5	81.0	550	90	3582	220	294	9000
		1180	710M-160R	15572	96.0	95.9	95.6	85.0	82.0	76.0	560	90	3521	215	650	11500
		880	800M-180R	20881	96.0	95.9	95.6	83.0	79.0	71.5	573	85	3490	210	980	15300
		710	800A-180R	25880	96.0	95.9	95.6	79.0	75.0	66.0	602	90	3521	220	2140	18500
		590	900M-200R	31144	96.0	95.9	95.6	78.0	73.0	62.5	610	85	3496	225	2280	20000
4000	3000	1780	630A-160R	11798	96.2	96.1	95.8	87.0	85.0	81.5	624	90	4094	220	449	10200
		1180	710A-160R	17797	96.2	96.1	95.8	85.0	82.0	76.0	638	90	4024	210	720	12200
		880	800A-180R	23864	96.2	96.1	95.8	83.5	79.5	72.0	650	90	4094	220	2100	18000
		710	900M-200R	29577	96.2	96.1	95.8	80.0	75.5	67.0	678	85	4059	230	2250	21900
		590	900A-220R	35594	96.0	95.9	95.6	78.0	73.0	62.5	697	90	4049	220	4000	23800
4500	3350	1180	800M-180R	20021	96.2	96.1	95.8	85.0	82.0	76.0	718	85	4490	225	810	16200
		880	800A-180R	26847	96.2	96.1	95.8	83.5	79.5	72.0	731	90	4470	220	2150	18200
		710	900A-220R	35594	96.2	96.1	95.8	80.0	75.5	67.0	763	90	4440	210	4060	23200
		590	900A-220R	40042	96.0	95.9	95.6	78.0	73.0	62.5	784	90	4400	215	4140	24400

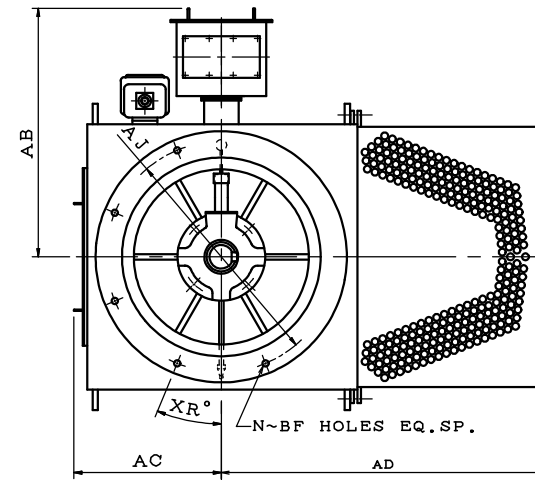
OUTPUT		FULL LOAD RPM	FRAME NO. (ERV)	TORQUE lb-ft	FULL LOAD						LOCKED ROTOR		BREAK- DOWN TORQUE %FLT	ROTOR GD <sup>2</sup> KG-M <sup>2</sup>	APPROX. WEIGHT KGS	
HP	(KW)				EFFICIENCY (%)			POWER FACTOR (%)			CURRENT A	TORQUE %FLT				CURRENT A
					FULL LOAD	3/4 LOAD	1/2 LOAD	FULL LOAD	3/4 LOAD	1/2 LOAD						
5000	3750	1180	800A-180R	22246	96.2	96.1	95.8	85.0	82.0	76.0	798	85	4990	225	1585	17800
		880	900M-200R	29830	96.2	96.1	95.8	83.5	79.5	72.0	812	90	4960	220	2200	22500
		710	900A-220R	35594	96.2	96.1	95.8	80.0	75.5	67.0	848	90	4940	210	4120	24300
		590	1000M-220F	44492	96.0	95.9	95.6	78.0	73.0	62.5	872	90	4910	215	4300	27500
5500	4101	1180	800A-180R	24470	96.3	96.1	95.8	85.5	82.5	76.5	872	85	5490	225	1700	19000
		880	900M-200R	32813	96.2	96.1	95.8	84.0	80.0	72.5	888	90	5460	220	2260	23500
		710	1000M-220F	35594	96.2	96.1	95.8	80.5	76.0	67.0	927	90	5420	210	4260	28500
		590	1000A-240R	48941	96.2	96.1	95.8	78.5	73.5	63.0	951	90	5380	215	5050	30020



VERTICAL STANDARD SOLID SHAFT, TEAAC TYPE, SQUIRREL CAGE ROTOR.



SHAFT EXTENSION DETAIL



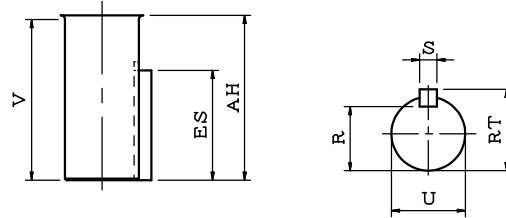
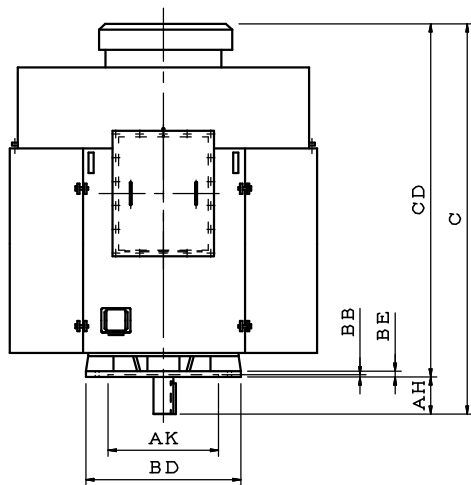
DIMENSIONS IN mm(INCH)

FRAME NO.	NO. OF POLES	MOUNTING							AB	AC	AD	CD	C	SHAFT EXTENSION				KEY SIZE			BEARING		FRAME No.		
		AK	AJ	BD	BB	BE	N~BF	XR						U	AH	V	R	ES	S	RT	UPPER	LOWER			
450M	4P&UP	762.0 (30)	914.4 (36)	1015 (40)	10	40	8-28.5 (8-1.125)	22.5	1305 (51.4)	615 (24.2)	1385 (54.5)	1950 (76.8)	2160 (85.04)	110 (4.331)	210 (8.27)	197 (7.76)	100 (3.937)	160 (6.3)	28 (1.102)	116 (4.57)	7322B	6226C3	450M		
450A	4P&UP											2140 (84.3)	2350 (92.57)												450A
450C	10P&UP											2360 (92.9)	2570 (92.57)												450C
500M	4P&UP	863.6 (34)	1016 (40)	1115 (44)	8	40	8-28.5 (8-1.125)	22.5	1355 (53.3)	665 (26.2)	1490 (58.7)	2040 (80.3)	2250 (88.57)								7324B	6226C3	500M		
500A	4P&UP											2240 (88.2)	2450 (96.47)	125 (4.921)	210 (8.27)	197 (7.76)	114 (4.488)	160 (6.3)	32 (1.260)	132 (5.20)					500A
500C	10P&UP											2490 (98.0)	2700 (106.30)												500C

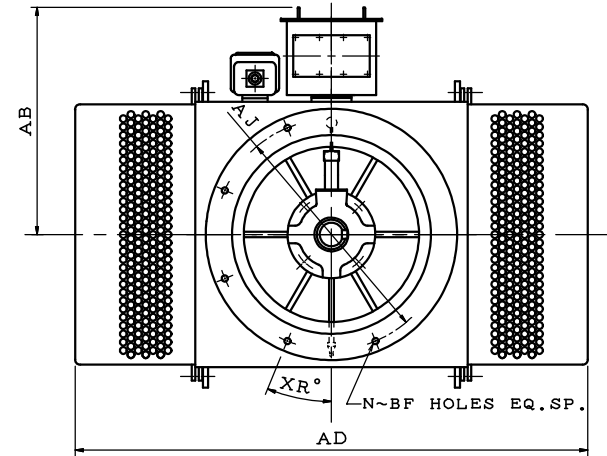
1. USABLE SHAFT LENGTH:V
2. UPPER BRG:ANTI-FRICTION BRG GREASE LUBRICATION
3. LOWER BRG:ANTI-FRICTION BRG GREASE LUBRICATION

OUTLINE DIMENSIONS SHEET  
 DWG NO.  
 3-PHASE INDUCTION MOTOR  
 FRAME NO. (ERV)450M-1000A

VERTICAL STANDARD SOLID SHAFT, TEAAC TYPE, SQUIRREL CAGE ROTOR.



SHAFT EXTENSION DETAIL



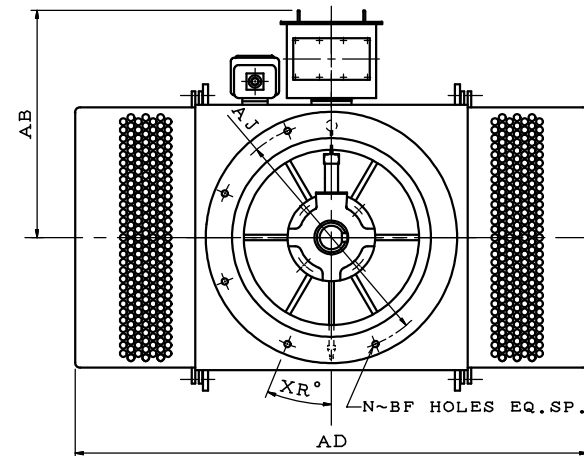
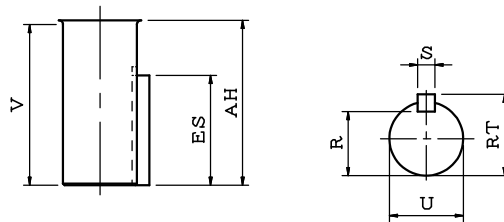
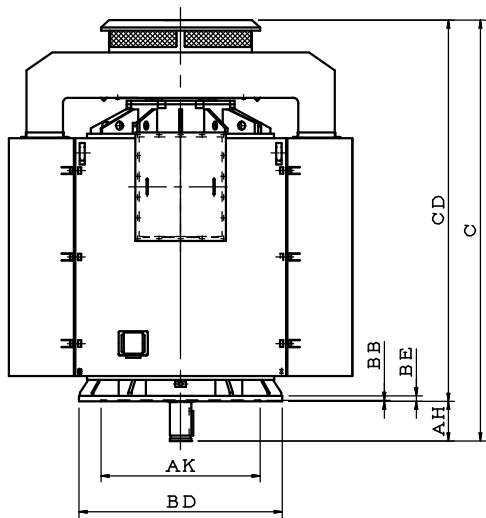
DIMENSIONS IN mm(INCH)

FRAME NO.	NO. OF POLES	MOUNTING							XR°	AB	AD	CD	C	SHAFT EXTENSION				KEY SIZE			BEARING		FRAME NO.
		AK	AJ	BD	BB	BE	N~BF	U						AH	V	R	ES	S	RT	UPPER	LOWER		
560M	4P&UP	965.2 (38)	1117.6 (44)	1220 (48)	10 (0.39)	40 (1.58)	8-28.5 (8-1.125)	22.5	1230 (48.4)	2306 (90.8)	2250 (88.6)	2460 (96.85)	125 (4.921)	210 (8.27)	197 (7.76)	114 (4.488)	160 (6.3)	32 (1.260)	132 (5.20)			560M	
560A	4P&UP										2470 (97.2)	2720 (107.09)	140 (5.512)	250 (9.84)	237 (9.33)	128 (5.039)	200 (7.8)	36 (1.417)	148 (5.83)	7324B	6230C3	560A	
560C	10P&UP										2750 (108.3)	3000 (118.11)										560C	
630M	4P&UP	1066.8 (42)	1219.2 (48)	1370 (54)	10 (0.39)	45 (1.78)	12-28.5 (12-1.125)	15°	1305 (51.4)	2555 (100.6)	2360 (92.9)	2610 (102.76)									6230C3	630M	
630A	4P&UP										2610 (102.8)	2910 (114.56)	160 (6.299)	300 (11.81)	287 (11.30)	147 (5.787)	250 (9.8)	40 (1.575)	169 (6.65)	7330B		630A	
630C	10P&UP										2960 (116.5)	3260 (128.35)									6234C3	630C	
710M	6P&UP	1117.6 (44)	1320.8 (52)	1525 (60)	10 (0.39)	45 (1.78)	12-28.5 (12-1.125)	15°	1378 (54.2)	2700 (106.3)	2515 (99.0)	2815 (110.81)									7330B	6234C3	710M
710A	6P&UP										2795 (110.0)	3095 (121.81)											710A
800M	6P&UP	1270.0 (50)	1473.2 (58)	1675 (66)	10 (0.39)	45 (1.78)	12-28.5 (12-1.125)	15°	1455 (57.3)	2955 (116.3)	2685 (105.7)	2985 (117.5)	180 (7.087)	300 (11.81)	287 (11.30)	165 (6.496)	250 (9.8)	45 (1.772)	190 (7.48)	7334B	6238C3	800M	
800A	8P&UP										3035 (119.5)	3335 (131.3)											800A

1. USABLE SHAFT LENGTH:V
2. LOWER BRG:ANTI-FRICTION BRG GREASE LUBRICATION

OUTLINE DIMENSIONS SHEET  
 DWG NO.  
 3-PHASE INDUCTION MOTOR  
 FRAME NO. (ERV)450M-1000A

VERTICAL STANDARD SOLID SHAFT, TEAAC TYPE, SQUIRREL CAGE ROTOR.



DIMENSIONS IN mm(INCH)

FRAME NO.	NO. OF POLES	MOUNTING							AB	AD	CD	C	SHAFT EXTENSION				KEY SIZE			BEARING		FRAME NO.
		AK	AJ	BD	BB	BE	N~BF	XR					U	AH	V	R	ES	S	RT	UPPER	LOWER	
900M	8P&UP	1473.2 (58)	1676.4 (66)	1880 (74)	10 (0.39)	50 (1.97)	12-35 (12-1.38)	15°	1565 (61.6)	3175 (125.0)	3135 (123.4)	3485 (137.20)	200 (7.874)	350 (13.78)	337 (13.27)	185 (7.677)	280 (11.0)	45 (1.772)	210 (8.27)	8P: 29340+6038	6044C3	900M
900A	8P&UP										3535 (139.2)	3885 (152.95)	220 (8.661)	350 (13.78)	337 (13.27)	203 (7.992)	280 (11.0)	50 (1.969)	231 (9.09)	10P&UP: 29340	6048C3	900A
1000M	10P&UP	1676.4 (66)	1879.6 (74)	2085 (82)	10 (0.39)	50 (1.97)	12-35 (12-1.38)	15°	1665 (65.6)	3400 (133.9)	3435 (135.2)	3785 (149.02)								29340	6048C3	1000M
1000A	12P&UP										3835 (151.0)	4245 (167.13)	240 (9.449)	410 (16.14)	397 (15.63)	220 (8.661)	360 (14.2)	56 (2.205)	252 (9.92)		6052C3	1000A

1. USABLE SHAFT LENGTH:V
2. LOWER BRG:ANTI-FRICTION BRG GREASE LUBRICATION

OUTLINE DIMENSIONS SHEET  
 DWG NO.  
 3-PHASE INDUCTION MOTOR  
 FRAME NO. (ERV)450M-1000A